

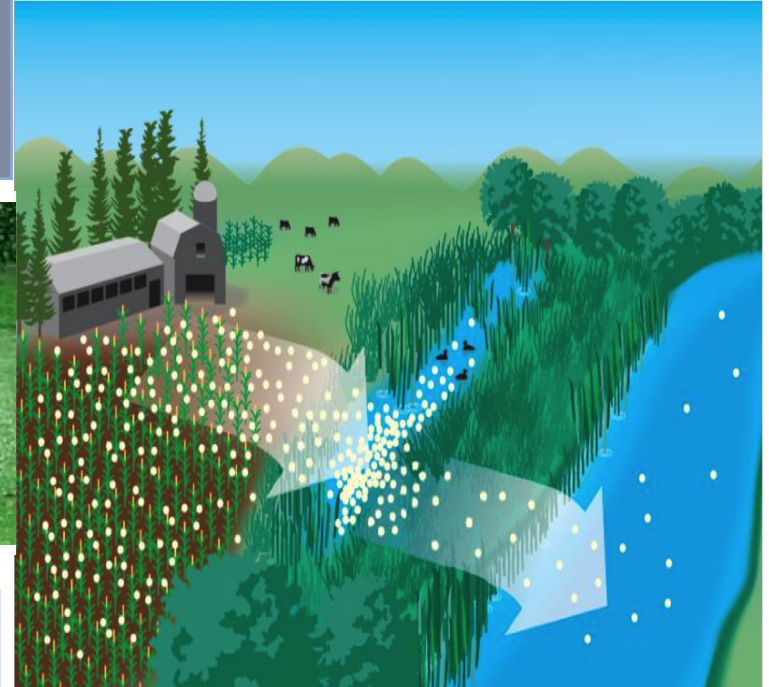
## LESS FERTILIZER SAVES MONEY AND THE ENVIRONMENT

### Fertilizers use in Dracut:

The use of excess Fertilizer is a "growing" problem for lakes, rivers, and streams.

- Impairments like **phosphorus** have serious effects to our local ponds and streams that ultimately flow into the Merrimack River.
- Organizations like the **Long Pond Association** spend between \$12-20k annually to remove algae and invasive weeds.
- Fertilizers from abutting properties to these water bodies, as well as fertilizers that wash down from properties upstream during rain events are a major contributor to high phosphorus levels in our streams.

*Excess and improper fertilizer use will runoff into our streams and waterbodies.*



### LAWN AND LEAF DISPOSAL

Location: Dracut Department of Public Works - Compost Facility  
833 Hildreth Street  
Dracut, MA 01826

**Days: Monday - Friday**

Times: 7:30-10:45 AM; 11:45 - 3:00 PM

**Spring Saturday Dates:**

May 9<sup>th</sup>, May 16<sup>th</sup>, May 30<sup>th</sup>  
Times: 8:00 - 4:00 PM

**Summer Saturday Dates:**

June 6<sup>th</sup>, June 13<sup>th</sup>, June 20<sup>th</sup>, June 27<sup>th</sup>, July 11<sup>th</sup>, July 18<sup>th</sup>,  
July 25<sup>th</sup>,  
August 1<sup>st</sup>, August 8<sup>th</sup>, August 15<sup>th</sup>, August 22<sup>nd</sup>, and August 29<sup>th</sup>,  
September 12<sup>th</sup>, September 19<sup>th</sup>, September 26<sup>th</sup>  
Times: 8:00 - 12:00 PM



The Compost Facility accepts leaves, brush, and grass clippings only with proof of residency. Screened compost is available at the compost site for residents to use on their lawns, gardens, or flowerbeds.

### **Clean Water Tips: How can you fertilize and help keep our waters clean?**

- Use fertilizer sparingly. Many plants don't need as much fertilizer or need it as often as you might think.
- Don't fertilize before a rain storm.
- Consider using organic fertilizers. They release nutrients more slowly.
- Keep a buffer for fertilizer use between the lawn and the water body nearest you.

*Created by: The Dracut Stormwater Department*